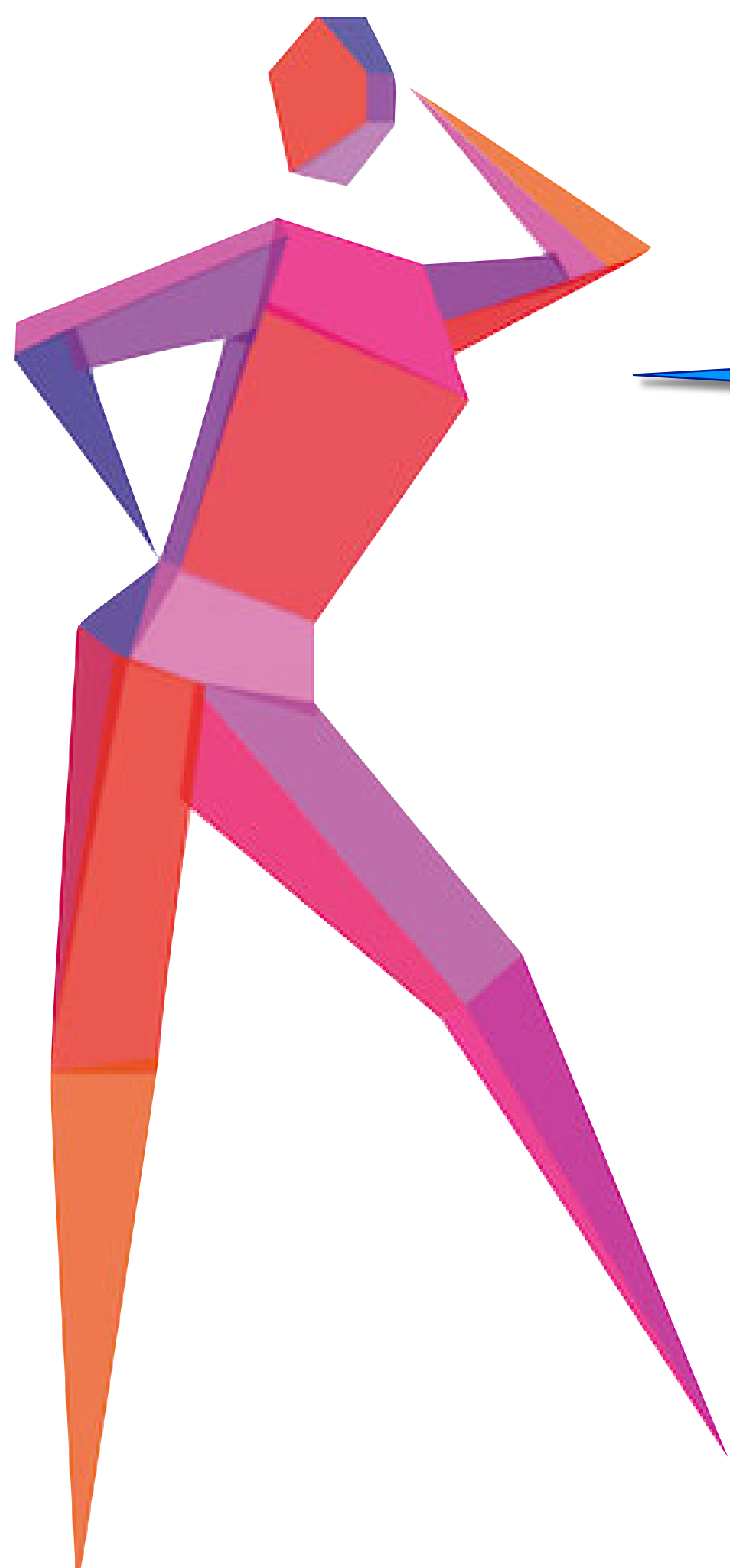


Journeys

Learning Objective:

To be able to create a piece of artwork in the style of an Aboriginal journey.



What can you
remember about
Aboriginal art and
symbols?

Think, pair, share your ideas.

BACK

NEXT

Aborigines believe that the world was created before humans came to Earth, in a period called the Dreamtime. They believe the world and everything in it was created by spirits, and that everything (humans, birds, animals, fish, plants) are all connected together. The spirits moved across the earth and added rocks, mountains, rivers, lakes, trees, waterholes and sand hills to create the landscape. The spirits went on great journeys to add all these elements to the world.

Wow! Sounds like the spirits journeyed to many places.



BACK

NEXT

Listen to your teacher read this Dreamtime story. Draw the serpents journey on a piece of white paper, while you listen.



The Rainbow Serpent

In the Aboriginal Dreamtime, the land was flat. The giant rainbow serpent, Goorialla travelled across the land in search of its tribe. It travelled from north to south and made the mountains. It kept traveling but couldn't find its tribe. It made the valleys and the rivers with its huge body. It reshaped the land as it slithered in search of its people.

One day Goorialla found its tribe. A terrible storm arrived and the tribe found shelter. Two men came to the tribe to ask for protection and Goorialla said "you can shelter in my MOUTH". Goorialla became concerned about what the tribe would say, so it slithered away from the tribe. No one ever saw Goorialla or the two men again. Goorialla's spirit is seen in the sky when a RAINBOW appears.

BACK

NEXT

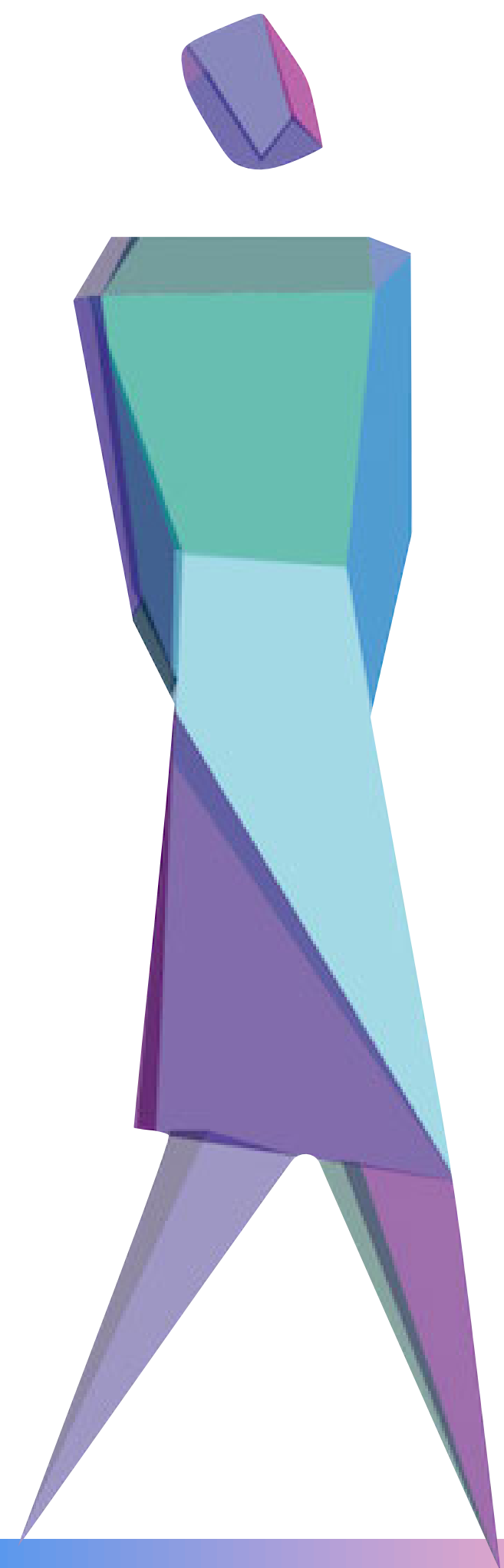
The Aboriginal people today still follow the Dreamtime journeys, to see the sights that were created. Details about the journeys were often passed down from generation to generation.

This aboriginal man is telling a Dreamtime story.



BACK

NEXT



What do you think
someone might see on
a Dreamtime
journey?

BACK

NEXT

Today, you will be creating your own piece of Aboriginal artwork to represent a journey. Imagine you are one of the spirits on a journey across the land.
What would you see?

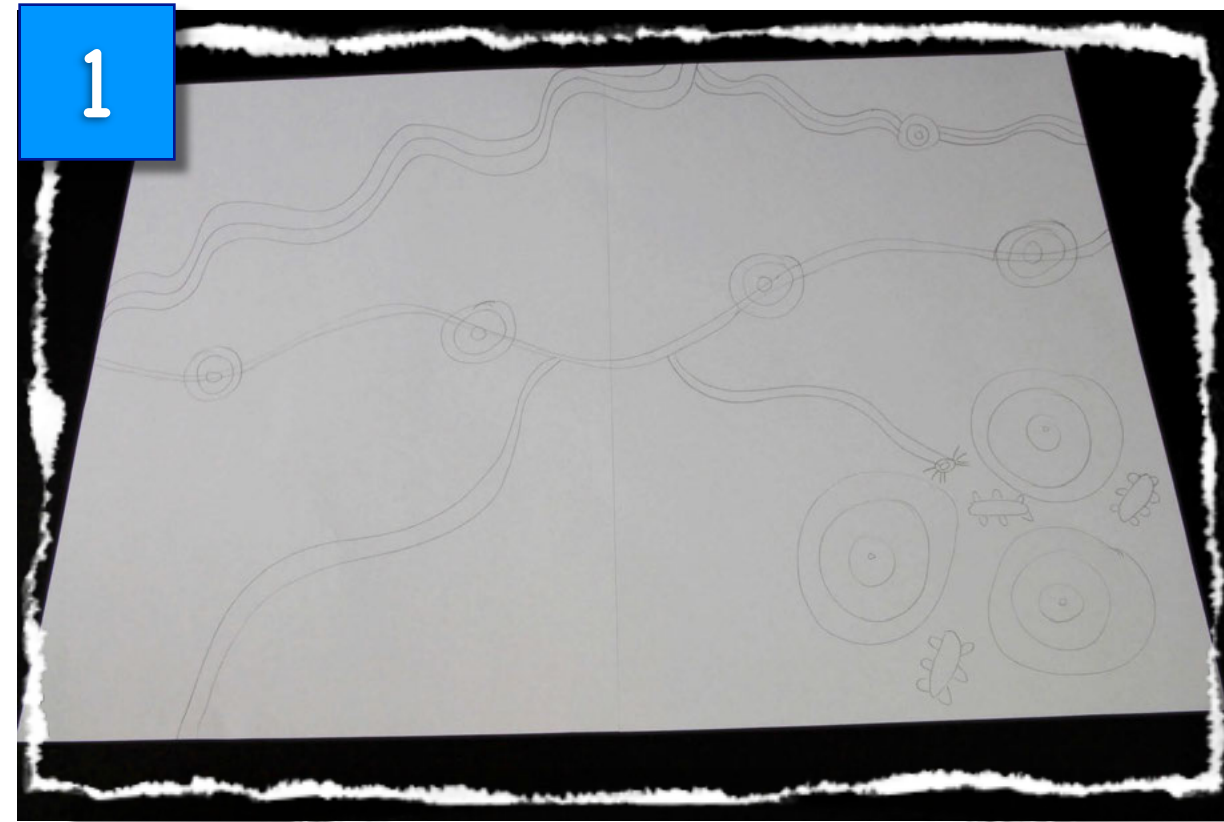
Ideas:



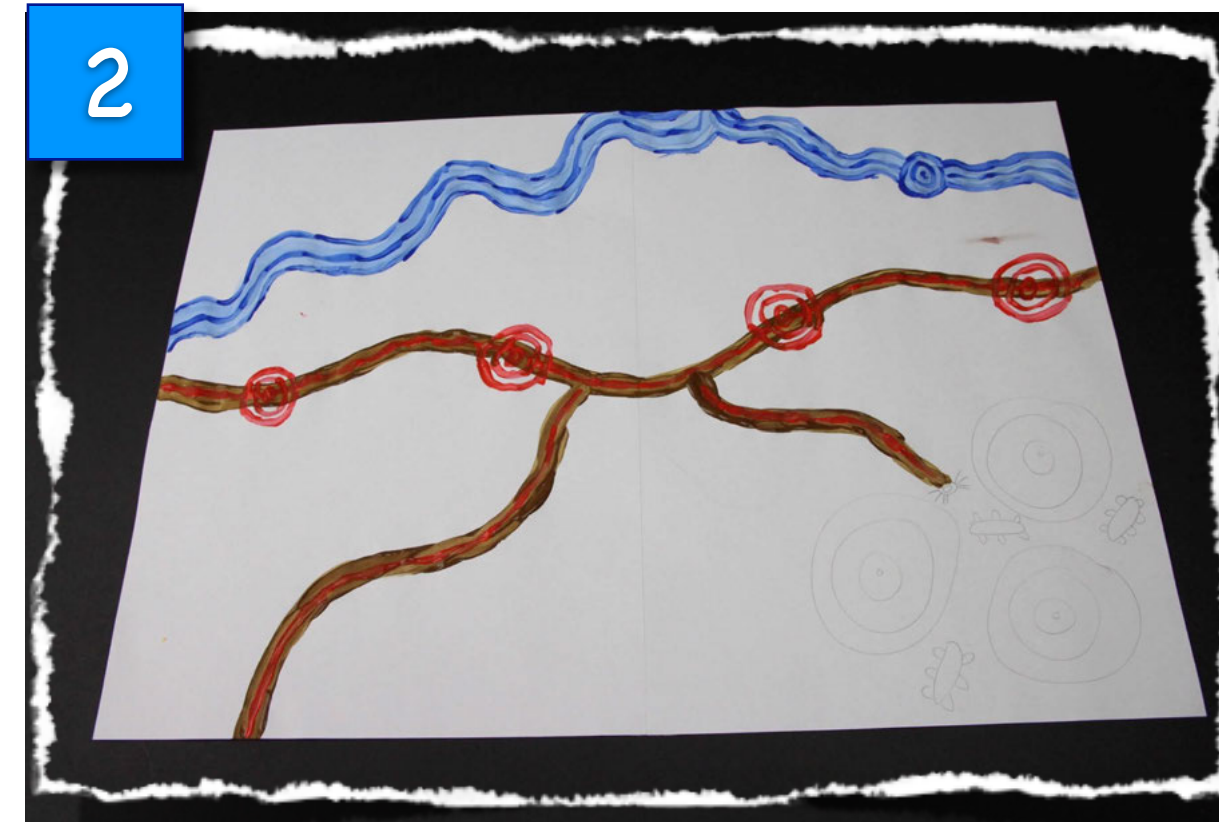
BACK

NEXT

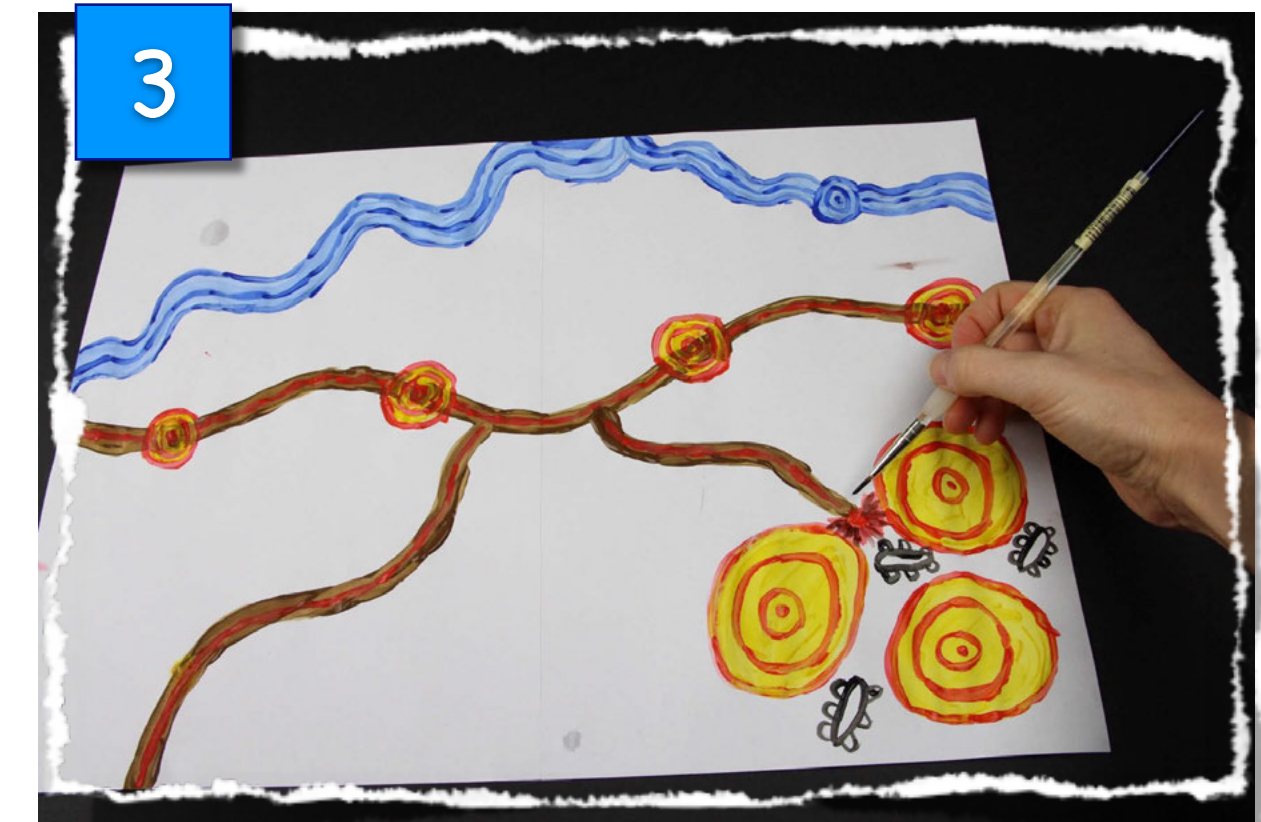
Here is an example of how to make an aboriginal dreamtime journey painting.



1 Firstly, find an A3-size piece of paper and draw a walking track, a river and a camp/meeting spot.



2 Using brown, yellow, red and blue colours (earth colours), paint over the things you drew.



3 Use a thin paint brush to add in extra line detail. This will give it an aboriginal feel.



4 Carefully paint the large white sections. You can use green for the grass, orange for the desert and purple for the water. Allow the paint to dry fully.

BACK

NEXT

6

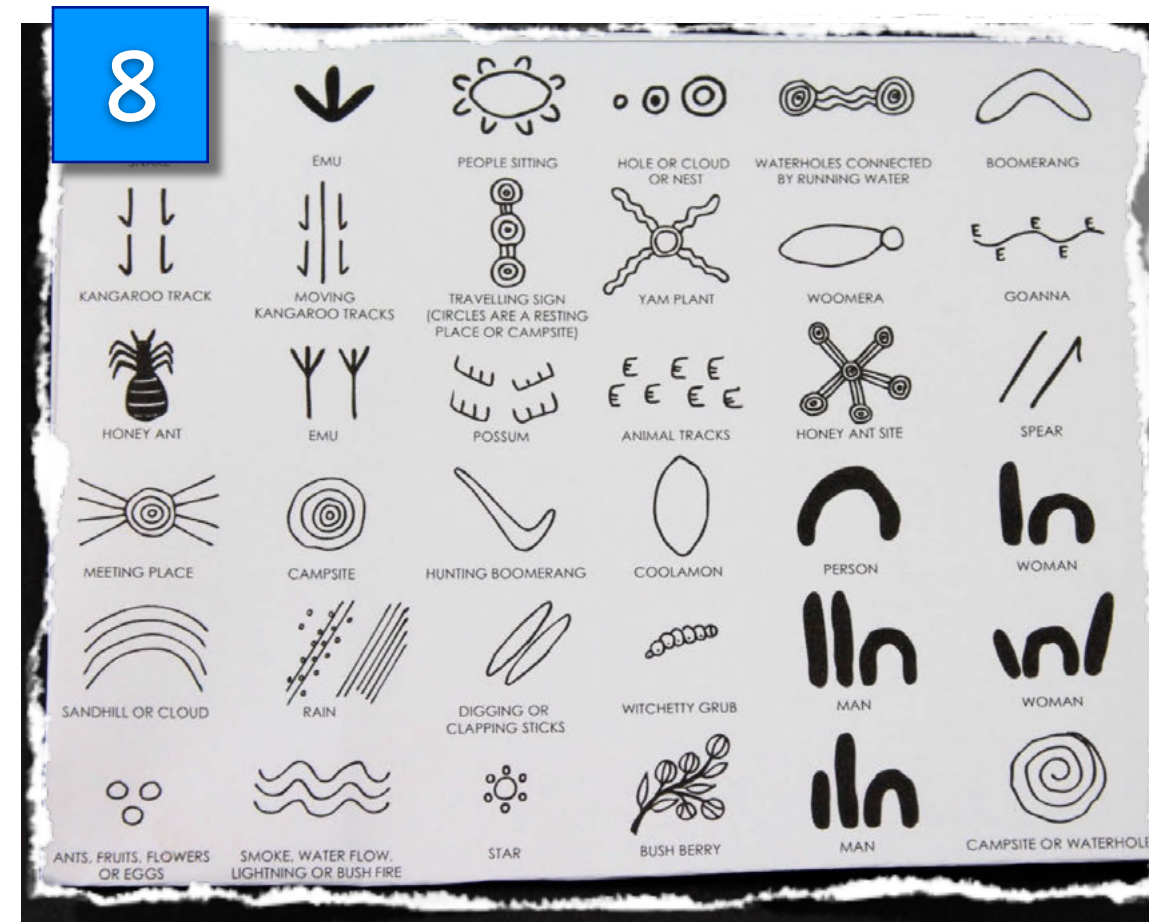


7



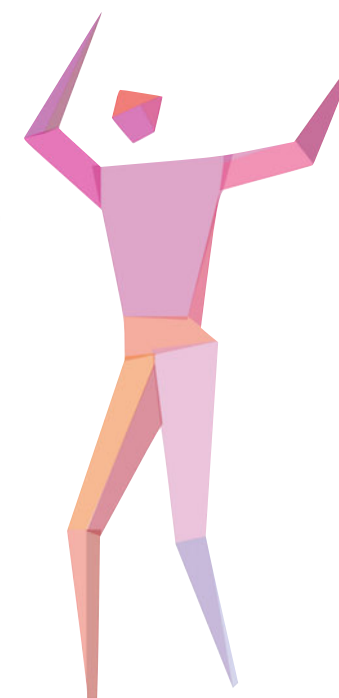
Use a stick or cotton bud to create the Aboriginal dot technique on the block sections of paint. Paint two sets of dots using two different colours. Try to use similar colours. Dark orange and yellow were used here.

8



Allow the dot patterns to dry and then think about some Aboriginal symbols you might like to add into your painting. What would you see on this journey?

Which symbols will you pick?



9



10



Add the symbols to your painting using black and brown paint, so the symbols stand out. Go over lines again with the same colour so they also stand out.

[BACK](#)
[NEXT](#)



Here is the finished
Aboriginal Dreamtime
painting.
Are you ready to try this
for yourself?



BACK

NEXT