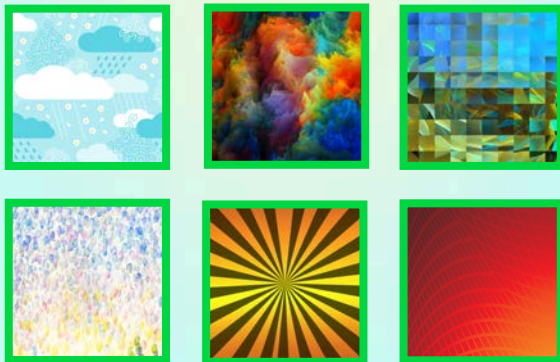


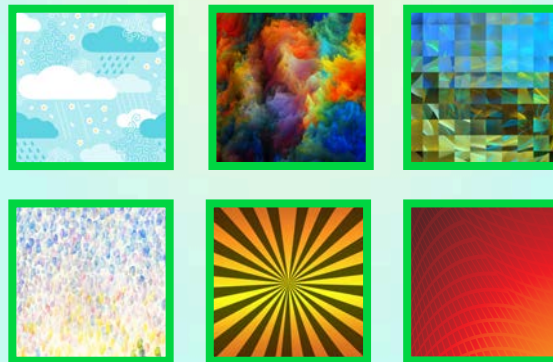
Cityscape Silhouettes

1. Find some A3 white paper.
2. Choose your medium. The options are felt tips, crayons, paint or coloured pencils.
3. Think about a background for a cityscape silhouette.
4. Design your background. The images below will help you.
5. Cut out one of the silhouettes and glue it onto your background.



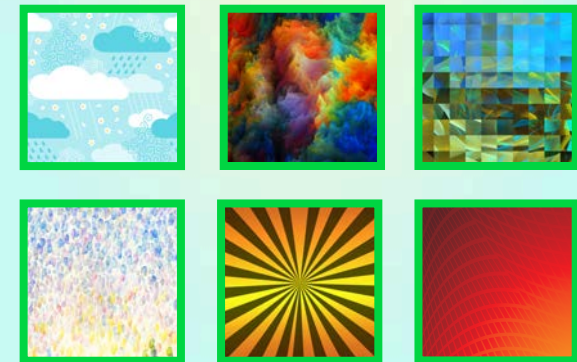
Cityscape Silhouettes

1. Find some A3 white paper.
2. Choose your medium. The options are felt tips, crayons, paint or coloured pencils.
3. Think about a background for a cityscape silhouette.
4. Design your background. The images below will help you.
5. Cut out one of the silhouettes and glue it onto your background.



Cityscape Silhouettes

1. Find some A3 white paper.
2. Choose your medium. The options are felt tips, crayons, paint or coloured pencils.
3. Think about a background for a cityscape silhouette.
4. Design your background. The images below will help you.
5. Cut out one of the silhouettes and glue it onto your background.



Cityscape Silhouettes

1. Find some A3 white paper.
2. Choose your medium. The options are felt tips, crayons, paint or coloured pencils.
3. Divide your A3 page in half, by drawing a line down the middle.
4. On one side of the page design a day-time background and on the other side design a night-time background.
5. Cut out one of the cityscape silhouettes and glue it onto your background.
6. If you are are feeling brave, paint your own cityscape using the silhouettes to guide you.



Cityscape Silhouettes

1. Find some A3 white paper.
2. Choose your medium. The options are felt tips, crayons, paint or coloured pencils.
3. Divide your A3 page in half, by drawing a line down the middle.
4. On one side of the page design a day-time background and on the other side design a night-time background.
5. Cut out one of the cityscape silhouettes and glue it onto your background.
6. If you are are feeling brave, paint your own cityscape using the silhouettes to guide you.



Cityscape Silhouettes

1. Find some A3 white paper.
2. Choose your medium. The options are felt tips, crayons, paint or coloured pencils.
3. Divide your A3 page in half, by drawing a line down the middle.
4. On one side of the page design a day-time background and on the other side design a night-time background.
5. Cut out one of the cityscape silhouettes and glue it onto your background.
6. If you are are feeling brave, paint your own cityscape using the silhouettes to guide you.



Cityscape Silhouettes

- 1. Find some A3 white paper.**
- 2. Choose your medium. The options are felt tips, crayons, paint or coloured pencils.**
- 3. Choose a part of a day that you will represent; dawn, day-time, dusk, night-time.**
- 4. On the A3 paper, design your chosen part of the day, using the medium you chose.**
- 5. Use the Cityscape Silhouettes as a guide and draw or paint your own cityscape on another piece of paper.**
- 6. Try to show light and small details in the buildings to represent the part of day you chose.**

Cityscape Silhouettes

- 1. Find some A3 white paper.**
- 2. Choose your medium. The options are felt tips, crayons, paint or coloured pencils.**
- 3. Choose a part of a day that you will represent; dawn, day-time, dusk, night-time.**
- 4. On the A3 paper, design your chosen part of the day, using the medium you chose.**
- 5. Use the Cityscape Silhouettes as a guide and draw or paint your own cityscape on another piece of paper.**
- 6. Try to show light and small details in the buildings to represent the part of day you chose.**

Cityscape Silhouettes

- 1. Find some A3 white paper.**
- 2. Choose your medium. The options are felt tips, crayons, paint or coloured pencils.**
- 3. Choose a part of a day that you will represent; dawn, day-time, dusk, night-time.**
- 4. On the A3 paper, design your chosen part of the day, using the medium you chose.**
- 5. Use the Cityscape Silhouettes as a guide and draw or paint your own cityscape on another piece of paper.**
- 6. Try to show light and small details in the buildings to represent the part of day you chose.**

